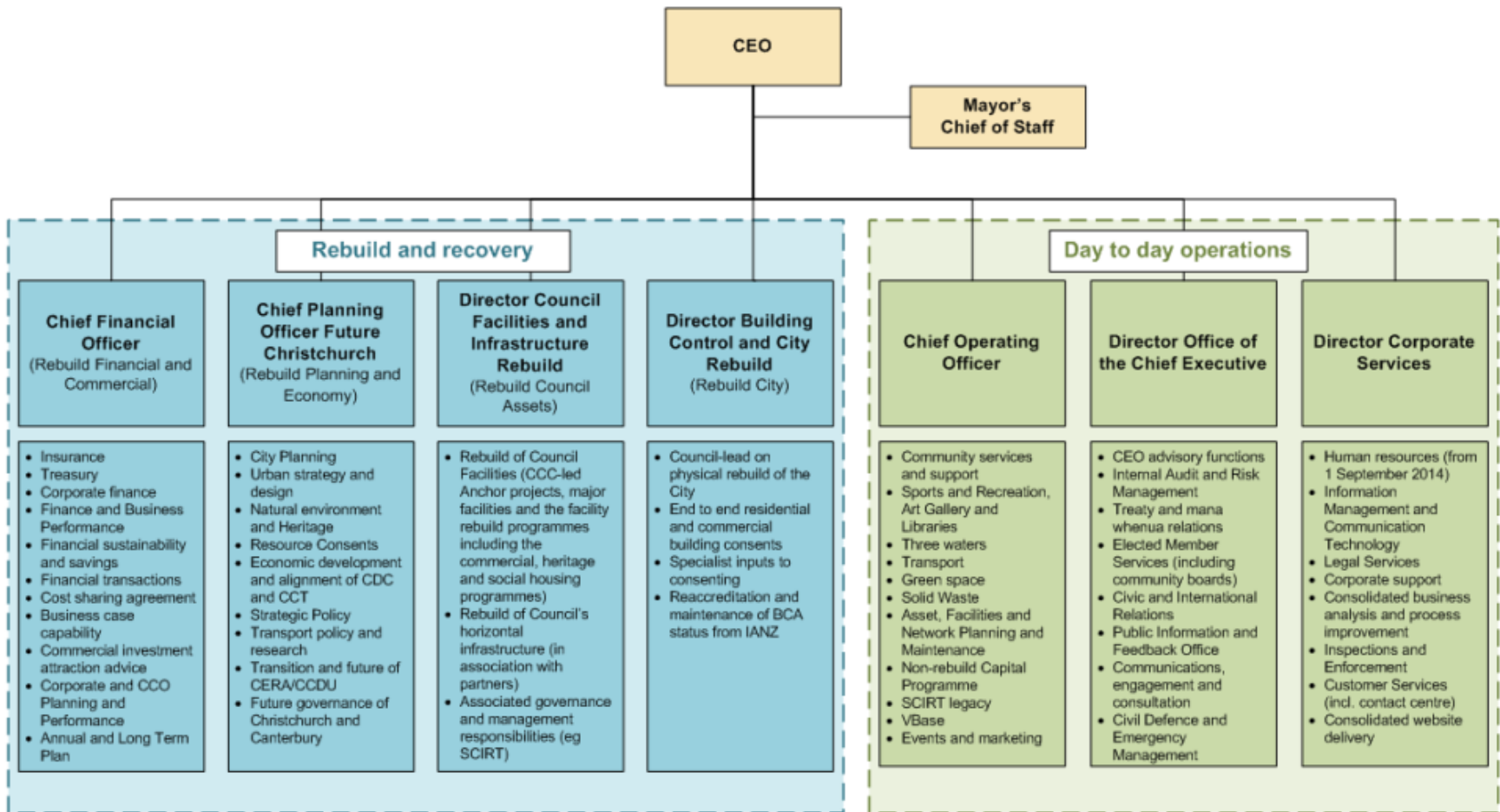


The Construction Clients' Group Christchurch

Meeting #12

Host Introduction, Kevin Locke, General Manager Capital Programme

The new organisational shape



The draft Annual Plan (Proposed Capital Programme)

External Portfolio	Group of Activities	Plan 2014-15
1. Capital Programme		
	City Planning and Development	0
	Community Support	4
	Corporate Capital	30
	Cultural and Learning Services	19
	Economic Development	0
	Parks & Open Spaces	10
	Provision of Roads and Footpaths	63
	Recreation and Leisure	3
	Refuse Minimisation & Disposal	1
	Regulatory Services	0
	Sewerage and the Treatment and Disposal of Sewage	50
	Stormwater Drainage & Flood Protection and Control	13
	Water Supply	19
1. Capital Programme Total		213
2. Major Community Facilities		
	Corporate Capital	52
	Cultural and Learning Services	49
	Provision of Roads and Footpaths	36
	Recreation and Leisure	108
2. Major Community Facilities Total		246
3. Facilities Rebuild		
	Community Support	9
	Corporate Capital	48
	Recreation and Leisure	5
3. Facilities Rebuild Total		62
4. Infrastructure Rebuild		
	Corporate Capital	0
	Parks & Open Spaces	7
	Provision of Roads and Footpaths	172
	Sewerage and the Treatment and Disposal of Sewage	364
	Stormwater Drainage & Flood Protection and Control	70
	Water Supply	15
4. Infrastructure Rebuild Total		628
Grand Total		1,148

Market Engagement Forum/Canterbury Procurement Forum

